



# Tweed Regional Sports Centre Feasibility and Concept



Market Analysis (part 1) Demand and Consultation Findings

## About this document

This document is an overview of the findings relevant to demand for a regional sports centre including an outdoor football spectator venue as part of Stage 2 of the Arkinstall Park redevelopment.

## Acknowledgements

@leisure would like to acknowledge the support and assistance on this project provided by Stewart Brawley, Manager Recreation Services, Tweed Shire Council.

## Definitions

In this document we have referred to the whole stage 2 developments as a **regional sports centre**.

The indoor facility component has been referred to as an **indoor courts sports facility**, and the regional football stadium is referred to as an **outdoor football spectator venue**.

Note: Views reported in the consultation and surveys are not necessarily the views of @leisure Planners or Tweed Shire Council.

## Table of contents

About this document.....	1
Acknowledgements .....	1
Table of contents.....	1
<b>Introduction .....</b>	<b>2</b>
Summary of findings.....	2
About this project.....	6
<b>Environmental analysis.....</b>	<b>7</b>
Demographic influences on demand.....	7
Secondary evidence of demand .....	12
Existing indoor sports in Tweed .....	13
The catchment of a regional sports centre at Arkinstall Park .....	15
<b>The demand for an indoor court sports facility .....</b>	<b>17</b>
What survey respondents said .....	17
Activities with potential for inclusion an indoor sports centre .....	18
Priority activities for inclusion in a new indoor sports centre .....	21
The gap in unmet demand and opportunities for indoor sports.....	22
Indicative program of use.....	26
Likely benefits of the indoor court sports facility.....	27
<b>Outdoor football spectator venue.....</b>	<b>28</b>
Demand for an outdoor football spectator venue .....	28
Potential use of an outdoor football spectator venue .....	29
Likely benefits of the outdoor football spectator venue....	31
Desired components for an outdoor football spectator venue.....	31

<b>Leveraging the 2018 Commonwealth Games.....</b>	<b>33</b>
Commonwealth Games use of a regional sports centre in Tweed.....	33

<b>Appendices .....</b>	<b>34</b>
Appendix 1: Demographic information for the Tweed Shire .....	35
Appendix 2. Summary of findings on-line survey.....	37
Appendix 3: List of organisations contacted .....	44
Appendix 4: Details of existing indoor sports facilities .....	45

© All rights reserved.  
No part of this publication may be reproduced, stored in a retrieval system or transmitted in any form, by any means, without the prior written permission of the Tweed Shire Council and @leisure.



Rear 534 Mt Alexander Rd  
Ascot Vale Vic 3032  
P: 03 9326 1662  
E: [info@atleisure.com.au](mailto:info@atleisure.com.au)  
[www.atleisure.com.au](http://www.atleisure.com.au)

## Introduction

### Summary of findings

#### Summary of demographic analysis

Demographic analysis has confirmed that Tweed has an aging population. This is contributed to by the trend for young people to leave Tweed in search of education or employment. It is compounded by the proposed residential development planned for the shire.

The high level of population growth however indicates that there is also an increasing number of young people, and supports the need for a regional sports facility.

#### Secondary demand

The need for a regional sports facility has been identified to some degree in previous Council strategy or documentation including:

- Tweed Regional Sports and Recreation Facility Plan (Leisure Futures / Amama 2006)
- Feasibility and Master Plan Arkinstall Park (Coffey / Stratcorp 2009)
- Tweed Shire Youth Strategy and Action Plan (including facilities plan) (Tweed Shire Council, 2013)

#### Current supply of indoor sports in Tweed

There are a number of indoor sports courts within 10 kilometres of the Arkinstall Park. Not-for-profit organisations and schools predominantly provide these. These facilities primarily cater for local level or social programs and indoor sports activities such as netball and indoor soccer, rather than local or regional club competition. Many of these facilities are not fully compliant for regional sports competition.

There is an indoor swim centre in Tweed, and Council's regional aquatic centre in Murwillumbah.

An overview of existing facilities is provided in Appendix 4.

#### The catchment of a regional sports centre at Arkinstall Park

As a regional sports centre, Arkinstall Park is likely to attract participation from areas to the north and south that are outside the Tweed Shire.

The catchment for the regional sports centre has been identified as:

- **The Region** (those travelling from outside the Shire and within about 20km): In 2013 the population of this catchment is 195,007

- **Tweed Shire:** In 2013 the population of this catchment is 90,196
- **Local users** (within walk /cycle distance – up to 2km): In 2013 the population of this catchment is 15,287.

#### Activities with potential for inclusion an indoor sports centre

Analysing indicative demand identified indoor gym and fitness activities, dancing, indoor swimming, yoga and martial arts as activities with high participation potential. See Table 4.

Indoor court sports with high projected participation and not well serviced are:

- Basketball
- Indoor netball
- Futsal (as distinct from indoor soccer)
- Volleyball
- Badminton

There is also high existing and potential participation in gymnastics. Consultation identified significant demand and opportunities for potential participation in Gymnastics in the Tweed Shire. Gymnastics currently hire a facility owned by the Salvation Army.

### Priority activities for inclusion in a new indoor sports centre

Activities that are a priority for inclusion in a Council indoor sports centre are those that have potential to increase sport participation in Tweed without unduly influencing those currently provided by social enterprises.

Activities identified as a priority for the indoor sports centre include (in descending order):

- Basketball
- Indoor netball
- Futsal (as distinct from indoor soccer)
- Volleyball
- Badminton
- Studio based activities (dance, martial arts and yoga)
- Gymnastics, and Gym / fitness

Note: there is very high potential demand for indoor aquatic activities, and in particular programmable water space. However Council has an indoor swim centre close by, and whilst this facility may be reaching the end of its useful life the availability of space in this second stage of development may preclude aquatics from being considered unless outdoor football is not provided on the site.

### The gap in unmet demand for indoor sports

The gap in the market is for competition level indoor sports including:

- organised basketball competitions at senior and junior levels for males and females and wheelchair basketball
- organised futsal competitions for juniors and seniors
- competition level indoor netball for older women and high levels of completion

There are benefits of provide a more purpose built facility for gymnastics and thereby providing for a wide range of disciplines suited to a wide range of people from preschool to senior levels, an inclusive of recreation programs for teenagers in related sports such as parkour and strapline. Gold Coast Gymnastics say however they are now ready to take on a full time venue in Tweed.

### Secondary uses for the indoor court sport facility

In addition to the primary users of an indoor court sport facility (basketball, futsal and indoor netball) the facility could meet demand for other, smaller indoor sports including:

- Volleyball
- Badminton
- Table tennis

Flexible spaces adjoining the indoor court sports facility could provide:

- Gym and fitness facilities
- Studio space for dance, yoga and martial arts

### Likely benefits of such an indoor court sports facility

Among the benefits of an indoor court sports facility include:

- increasing participation in indoor competition sport from grass roots to regional level
- a pathway for sports participants from local to higher levels of competition within the Tweed Shire and the wider region
- providing a greater depth of competition in the nominated sports within the broader region
- providing a range of activities that diversifies the offer and meets demand from both males and females
- providing for both recreational and a competition pathway for dance, martial arts and yoga activities and enable these to grow
- co-location of gym and fitness space with indoor court sports and outdoor netball and tennis activities
- viable space for multiple court competitions for basketball, futsal and indoor netball, that is suitable for

regional tournaments, and minimise the need for participants of both domestic and representative sides to always travel to facilities in the Gold Coast

- the ability to meet an increasing demand by women and older adults for indoor physical activities
- the ability to provide a place to exercise without having to worry about the by sun and rain.

### **Demand for an outdoor football spectator venue**

Demand for sports using the outdoor football spectator venue is most likely to come from **soccer**, followed by **rugby union**, **rugby league** and **touch football**.

Of the football sports analysed, **Rugby League** has the highest rate of attendance at events in 2009-10 (8.9% and decreasing from 9.3% in 2006) compared to outdoor soccer (5.4% and growing from 3.5% in 2006) and rugby union (3.3% and decreasing from 4.3% in 2006).

A reduction in the number of pitches will impact on the clubs operation at Arkinstall Park, however the introduction of lights to any outdoor fields in the new development may offset this to a degree.

### **Potential use of an outdoor football spectator venue**

Potential uses for the outdoor football spectator venue include:

- Regional soccer grand final weekend (1 per year)
- Representative Rugby Union carnivals (1 per year)
- Rugby union finals and grand finals (over the finals period annually)
- Rugby Union representative games (for example against the Gold Coast Breakers)
- School rugby, soccer and touch

### **Likely benefits of the outdoor football spectator venue**

Benefits of an outdoor football spectator venue in the Tweed Shire include:

- a pathway for sports participants from local to higher levels of competition within the Tweed Shire
- increasing economic inflow from potential events and tournaments
- increasing the profile of the Tweed Shire as a location for regional sports activities

### **Commonwealth Games use of a regional sports centre in Tweed**

It is unlikely that the Regional Sports Centre will be available in time to seek pre-games arrangements.

This means Commonwealth Games use is not a practical consideration for Stage 2. F Arkinstall Park.

### **Desired components of an indoor court sports facility**

Desired components of an indoor court sports facility include:

- Three timber floor courts suitable for competition level basketball, futsal and indoor netball
- One equivalent court purpose built for gymnastics
- Flexible rooms suitable for studio space/group fitness and regional team preparation

### **Desired components of an outdoor football spectator venue**

Desired components of an outdoor football spectator venue include:

- Four grass pitches suitable for regional competition level soccer, rugby league, rugby union and touch football
- Grandstand seating for up to 500 (or 2,000?) people
- State and regional matches for amateur competition ie state youth championships

Preliminary Draft Only

## About this project

### The brief

The Tweed Shire has engaged @leisure Planners to prepare a feasibility and concept design for a Regional Sports Centre proposed as stage 2 of the Arkinstall Park development.

The market analysis will analyse the demand for indoor sports activities and the market for regional outdoor events with the aim of recommending the required facility mix for the regional sports centre.

### Methods

Market analysis has been undertaken using analysis of available data including:

- Exercise, recreation and sport survey (Australian Sports Commission, 2010)
- Sports and Physical Recreation: A Statistical Overview, Australia, 2012 (Australian Bureau of Statistics, 2013)
- Tweed Shire demographic data (Forecast ID June 2013)

Community and stakeholder engagement included:

- An online survey of over 100 people
- Collection and analysis of submissions
- Over 50 telephone interviews with local sporting clubs, existing facility providers, associations and peak bodies as well as schools, other facilities and Council staff
- Workshops and forums with opportunities for stakeholders and community members to provide feedback on demand and issues

Feedback regarding the indoor court centre focused on demand for activities, existing patterns of use and current service provision.

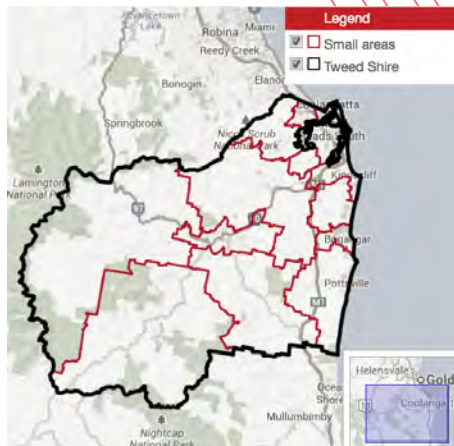
## Environmental analysis

### Demographic influences on demand

Tweed Shire is located in the north-east corner of New South Wales, about 860 kilometres north of Sydney and around 100 kilometres south of Brisbane.

Tweed Shire is bounded by the Queensland border, the Scenic Rim Region and Gold Coast City in the north, the Coral Sea in the east, Byron Shire and Lismore City in the south, and the Kyogee Council area in the west.

**Figure 1: The Tweed Shire**



### Population

Total population and projected growth and likely density have a considerable bearing on the range and types of facilities required, the viability of certain types of facilities and the hierarchy of facilities over all.

The Tweed Shire population in 2013 is 90,196 and is expected to grow to 128,863 by 2031, an increase of 43%.

The growth in population will be driven by new residential developments planned for the shire. Developments across Cobaki, West Kingcliff, Terranora and Kings Forest are forecast to introduce over 31,000 people to the Tweed Shire.

### Other demographic influences

There are some key demographic influences on participation in sport and recreation activities that will influence demand for the regional sports centre.

Table 1 shows the impact of age, gender, household type, income and employment, transport and socio-economics on demand for a regional sports facility.

Demographic analysis identified the trend toward an aging population in the Tweed Shire. This is reflective of the social trend identified in the Tweed Youth Strategy (Tweed Shire 2013) that a high proportion of young people leave the Tweed Shire when they reach 18 to access employment, study and other opportunities.

A regional sport centre presents an opportunity to engage this age group with participation and employment opportunities in coaching, training or facility management.

In addition, the aging demographic triggers demand for indoor programs and social activities that are affordable and close to home.

With an aging population there is a growing importance on accessible and inclusive facilities, which cater for spectators.

Income and employment factors indicate that a sports facility introduced in the Tweed area will need to address the access requirements of a low socio-economic demographic to encourage use.

The introduction of a new publicly owned regional sports centre has the scope to provide equitable access to users and clubs, minimising the costs passed on to individuals.



Arkininstall Park has low links to public transport and will require users to access by car. The site has good access points via road and the Tweed population has a high degree of access to cars or personal transport.

Tweeds even gender distribution indicates that the regional sports centre should promote activities where participation rates are high for females, including fitness programs (aerobics, yoga), netball, dancing and badminton.

Families with dependant are also predisposed to attending outdoor events including school sports days and local competition grand final events.

Preliminary Draft Only

**Table 1: Demographic influences on demand, and trends**

Factor	Tweed Shire Demographic characteristics	Trends	Influences on demand and trends in sport participation
<b>Total Population</b>	Tweed Shire population is expected to grow by almost 45% from 90,196 to 128,863 from 2013 to 2031.	Population increases are largely through new release areas, which will provide an increase in young persons.	Likely increase in demand for sports facilities both indoor by 15,860 estimated participants and outdoor by 15,930 estimated participants outdoor court sports, green based and field/pitch based sports in the Tweed area
<b>Age</b>	<p>The number of people aged 5-14yrs will increase by over 4,800 (45%) from 2013 to 2031. The proportion of the overall population will remain constant at 12%.</p> <p>The population aged 15-24 will increase by almost 3,000 (30%) from 2013 to 2031. The proportion of the overall population will decrease by 1% to 10%</p> <p>The Tweed Youth Strategy (Tweed Shire 2013) indicates that a high proportion of young people leave the Tweed Shire when they reach 18 to access employment, study and other opportunities.</p>	<p>School age children typically have the highest participation rates in sport.</p> <p>People aged 15 to 17 years tend to have the highest rate of attendance (58%) at sporting events while people aged 65 and over have the lowest.<sup>1</sup></p>	<p>The growth in school age group is positive for sustaining club sports and development programs through to 2031. The high participation in this age group is likely to be reflected in a high demand for futsal and basketball as these club sports have a young profile and a high demand for ‘pay as you play” leagues.</p> <p>A regional sport centre presents an opportunity to engage this age group and encourage their retention with participation and employment opportunities in coaching, training or facility management.</p>
<b>Age (continued)</b>	The population aged 65 and over will increase by over 11,500 (56%) from 2013 to 2031. The proportion will increase by 2% to 25%	<p>Older people are active longer than ever before and trigger demand for indoor programs and social activities that are affordable and close to home.</p> <p>With an aging population there is a growing importance on accessible and inclusive facilities, which cater for spectators. Anecdotally there is a high likelihood that club involvement and volunteerism could increase among this age group.</p>	<p>With the high number of retirees living in the Shire from elsewhere there are opportunities for a new indoor centre to develop social programs and friendships through physical activity and sport.</p> <p>Indoor activities such as women’s netball and programs for older adults in badminton, table tennis and soft tennis present an opportunity for the indoor centre – as they are likely to exhibit strong demand, beneficially during the day and off-peak times, when demand for competition sport will be low.</p>

<sup>1</sup>4156.0 - Sports and Physical Recreation: A Statistical Overview, Australia, 2012

Factor	Tweed Shire Demographic characteristics	Trends	Influences on demand and trends in sport participation
<b>Gender</b>	Gender distribution is 49% male and 51% female. This is expected to be an even split in 2031.	<p>There are an increasing proportion of females in Australia.</p> <p>Whilst overall participation rates in sport and physical activities are slightly higher amongst males. Participation rates in organised activities are similar for males and females. Female participation tends to be of shorter duration and more frequently than males. It tends to be less weekend based and in fragmented times arranged around work and family commitments.</p> <p>An estimated 2,168 More women participate in fitness (19% compared with 15% for men).</p> <p>In recent years there has been a significant increase in the number of females participating in sport and physical activities primarily due to the availability of gym and fitness program opportunities.</p>	<p>A balance in activities suitable to both genders will be important in any new facility.</p> <p>It is therefore important that a regional sports facility encourage participation amongst women and young women.</p> <p>Indoor activities that should be promoted at a regional sports facility where participation rates are high for females might include fitness programs (e.g. aerobics, yoga), netball, gymnastics, dancing and badminton).</p> <p>The female population offer an important market for off peak time competitions in an indoor centre, during the day.</p>
<b>Household type</b>	<p>Couples without dependents and lone person households are the most common with 22,890 in the Shire (60%) combined.</p> <p>Households that are families with dependents account for 23.1%, 8,814 of households in the shire in 2013. It is estimated there will be 12,840 households that are families with dependents in 2031.</p>	<p>Demand for sports activities is likely to be highest amongst dependent children living with a parent, followed by couple households. Parents with dependent children spend the least amount of time on sport and outdoor activities.</p> <p>Families with dependant children are also predisposed to attending outdoor events including school sports days and local competition grand final events.</p>	
<b>Income and employment</b>	<p>Unemployment in the Tweed Shire is 8.3%, 2,938 of the total labour force for the shire. This has grown from 7.1% in 2006.</p> <p>Medium to low incomes are highly representative of the Tweed Shire (60%) compared with 55% for regional NSW.</p>		<p>A regional sports centre will need to cater for low cost and flexible programming as families in the area are less likely to spend money on travel, equipment and memberships fees to participate in sport and outdoor activities.</p>

Factor	Tweed Shire Demographic characteristics	Trends	Influences on demand and trends in sport participation
<b>Transport</b>	Over 85% of Tweed Shire residents own a car, consistent with the average for regional NSW	The regional sports centre will most likely be accessed by car and parking will be a core consideration in the facility provision.	
<b>SIEFA index of relative disadvantage</b>	<p>The Tweed Shire has a ranking of 959.</p> <p>The Tweed Shire is close to the median point of the SIEFA index (1,000), however other indicators, including income and employment, and research, including the Tweed Shire youth strategy (2013) have identified a need to engage disadvantaged audiences in particular youth and unemployed.</p>	There is a relationship between the socioeconomic index and sport participation and as the index decreases the likelihood of participation decreases, therefore it is essential to provide low cost and flexible programs to residents.	

Preliminary Draft

## Secondary evidence of demand

In addition to residential growth identified, previous reports and community engagement initiatives have identified the need for a regional sports centre, including an outdoor football spectator venue in Tweed. These are discussed.

### ***Tweed Regional Sports and Recreation Facility Plan (Leisure Futures / Amama 2006)***

The facility plan identified an immediate need for a 2 court indoor court facility in the Tweed Shire. This was primarily based on the needs of local basketball and the potential for indoor netball.

The changes in the environment since 2006, in particular the emergence of futsal as a major participation activity, have increased the demand for an indoor court facility since this report.

The report recommended an upgrade to the grandstand to include covered seating and lighting for multi-purpose football fields at Arkinstall Park.

### ***Feasibility and Master Plan Arkinstall Park (Coffey / Stratcorp 2009)***

Following the 2006 facility plan, a master plan and feasibility was developed for Arkinstall Park.

The feasibility identified that there was limited scope for additional use of existing facilities by basketball and that this constrained growth in participation.

In addition, the feasibility identified a lack of regional facilities for rugby union and soccer, siting limitations of the existing rugby league facility at Piggabeen Park as car parking and support infrastructure.

The recommendations of the feasibility and master plan have been split into 2 stages.

Stage 1, focusing on redevelopment of existing tennis and netball infrastructure is currently underway.

The remaining elements have been combined as a regional sports centre, including an indoor court centre and an outdoor football spectator venue. This stage, stage 2, is the subject of this market analysis.

### ***Tweed Shire Youth Strategy and Action Plan (including facilities plan) (Tweed Shire Council, 2013)***

The Tweed Shire Youth Strategy has captured trends that will impact the demand for the regional sports centre.

The strategy identified a gap in the market for a Council managed leisure centre that meets the wider need of the community.

In addition, social trends identified by the strategy included:

The distribution of forecast growth in the youth population is weighted to developing areas including Cobaki-Piggabeen and Balimbil-Balimbil Heights.

The strategy highlights that while the population of young people will grow from 2013 to 2031, the proportion of young people will decrease. This is a result of growth being offset by young people leaving the area to seek employment or education.

Principles to be considered in the design of community facilities include the opportunities and advantages of co-locating facilities for different services and purposes, for example shopping, recreation and health.

## Existing indoor sports in Tweed

### ***Provision of indoor sports in the Tweed Shire and surrounding area***

There are a number of indoor sports courts within 10 kilometres of the Arkinstall Park development. The majority are run by not-for-profit organisations or are school facilities. Most offer affordable programs that are less structured and more flexible than association run competitions, or hire their facilities to clubs.

Indoor sports facilities identified in the market analysis within 10 kilometres of the Arkinstall Park are as follows:

#### Not-for-profit operated:

- PCYC Tweed Heads (1 timber court)
- Tweed Super Sports and Community Centre – Church of Christ (3 synthetic grass courts)
- Banora Point Salvation Army Sports and Leisure Centre (1 timber court)

#### Privately operated:

- The Seagulls Club (2 synthetic courts)
- South Tweed Sports (indoor bowls, table tennis, darts, pool/ snooker)
- Coolangatta -Tweed Tenpin Bowling Centre

#### School operated:

- Tweed River High School (1 timber court)
- Banora Point High School (sports hall)

These facilities are unlikely to be compliant for club competition sports, especially for regional level competitions.

Tweed Super Sports Centre and Seagulls Club are the only facilities within 10 kilometres with multiple sports courts available for public use. Both offer synthetic surfaces that are not suitable for basketball.

Tweed Super Sports Centre has 3 synthetic grass courts and is owned and operated by the Tweed Heads /Coolangatta Church of Christ. Tweed Super Sports hosts social competitions for indoor netball and indoor soccer (as opposed to futsal).

The Salvation Army Leisure Centre is now used almost full time by the Gold Coast Gymnastics Club. There is limited use of the same facility by fitness classes and indoor bowls.

Futsal currently played in a two-court netball sized venue (Seagulls). This is not large enough for regional competitions, although the facility current meets the level of current needs. Indoor soccer is however played in not for profit centres such as Tweed Super Sports Centre.

South Tweed Sports provides indoor bowls and carpet bowls, table tennis, darts, and pool/ snooker.

There is also a tenpin bowling centre in Tweed Heads.

Basketball competition is not played in Tweed Heads, although training is conducted at the PCYC. Basketball competition is played in Murwillumbah. The local club plays into Queensland competition.

Indoor sports facilities within 20 kilometres of Arkinstall Park) are also used by Tweed Shire residents. These include:

- Paramount Adventure Centre
- Tally Valley Indoor Sports Centre
- Tallebudgera Active Recreation Centre
- Ozsports Burleigh

The Paramount Adventure Centre is a privately operated indoor rock climbing facility. Both the Tally Valley Indoor Sports Centre and Ozsports in Burleigh operate privately run indoor soccer, indoor netball and indoor cricket competitions.

The Tallebudgera Active Recreation Centre runs school based recreation camps and is operated by the Queensland State Government. This facility has accommodation onsite and its facilities include a 3 indoor good quality competition basketball courts, a squash court, gym and outdoor courts and playing fields. The centre is the southernmost venue used by the Gold Coast Basketball Association.

Table 2. shows the access to indoor sports in and around Tweed.

**Table 2: Indoor sports provided at facilities in the Tweed shire and surrounds**

Distance from Arkinstall Park	0 - 5 kms	6 - 10 kms	11 - 20 kms
<b>Sport</b>			
Aerobics/fitness	✓		
Swimming	✓		
Roller sports			✓
Dancing	✓		
Yoga	✓		
Basketball	✓		✓
Martial arts	✓		
Weight training	✓		
Football (indoor)	✓	✓	✓
Squash/ racquetball			✓
Netball (indoor)		✓	✓
Boxing	✓		
Gymnastics	✓		
Volleyball		BV	✓
Badminton	✓		
Cricket (indoor)		✓	✓
Table tennis	✓		
Tenpin bowling		✓	
Carpet bowls	✓		
Rock climbing			✓
Hockey (indoor)			

**Complementing privately owned and operated facilities in the Tweed Shire**

The Regional Sports Centre should aim to minimise its impact on the existing market for indoor sports provision within the Tweed Shire. The existing market includes:

- predominantly not for profit operated single court facilities in the Tweed Shire
- predominantly social or local level indoor netball, indoor soccer, futsal and indoor cricket
- training for basketball
- a temporary base for gymnastics

The online survey identified that 64% of respondents who currently participate in activities in Tweed, the Gold Coast and surrounding areas would transfer their activities to a new centre if available.

A new indoor court centre should target club and association level play up to regional participation. This is expected to reduce the direct competition with smaller, local facilities providing social programming in netball and futsal.

The indoor court sports centre should aim to attract Tweed Shire residents currently playing indoor sports on the Gold Coast (30% of survey respondents).

**Provision of regional outdoor events in the Tweed Shire and surrounding area**

Consultation identified a low level of regional outdoor football spectator venues with a regional catchment. Sports interviewed, including rugby union and soccer identified Carrera Sports Complex and Crozier Field in Lismore as the closest regional level facilities capable of hosting tournaments or events requiring multiple fields.

Piggabeen Sports Complex football fields (home of the Tweed Seagulls – 2 full size fields) is within in with 5 kilometres of Arkinstall Park.

The existing facilities at Arkinstall Park (home of Tweed United FC) are 4 full size fields.

57% of survey respondents agreed that there was demand for an outdoor rectangular stadium.

In order to enable the outdoor football spectator venue to attract regional events and tournaments, a grandstand and multiple pitches is required.

## The catchment of a regional sports centre at Arkinstall Park

As a regional sports centre, Arkinstall Park is likely to attract participation from areas to the north and south that are outside the Tweed Shire.

The existing tennis and netball facilities currently host competitions that attract teams from the Gold Coast and surrounding areas, (for example netball).

In addition, there are a number of clubs and associations in the Shire that currently play into Gold Coast competitions, for example basketball.

The catchment for the regional sports centre has been identified as:

- **The Region** (those travelling from outside the Shire and within about 20km)
- **Tweed Shire**
- **Local users** (within walk /cycle distance –up to 2km)

Table 5 shows the relative size of the population accessible in each catchment.

**Table 3: Catchment populations for regional sports centre**

Catchment	Radius from Arkinstall Park	2013 population	2031 projected population
Nearby residents	2km	15,287	16,266
Tweed Shire	Tweed Shire	90,196	128,863
Regional users	20km	195,007	257,136

### Local users

The catchment for local users will be people who access the centre as their primary option for participation in sports (older adults and school aged children) or social in pay as you play programs, competitions that are not home and away, in addition to development programs and off peak programs during the day.

In particular this catchment will target young people and older adults that are not able to drive a car. Proximity to the centre will drive the preference of potential users toward using Arkinstall Park over other alternatives.

A catchment radius of 2km from Arkinstall Park has identified 15,287 people in this segment. Due to its developed nature this segment has a lower growth rate than others analysed.

This catchment has a high median age, higher density housing, and more people from a non-English speaking background than for the Shire wide catchment.

### Tweed Shire

The local government area defines a catchment of people likely to participate in Tweed Shire based sports clubs or attend activities and events held at Arkinstall Park.

It is estimated in 2013 there are 90,196 people in this catchment, expected to grow to 128,863 by 2031.

### The Region

The largest catchment for use of the indoor and outdoor components of the regional sports centre is likely to be within a 20km radius of Arkinstall Park.

This encompasses the urban areas of the Tweed Shire as well as densely populated areas north of the Queensland border up to Palm Beach. The market catchment includes people who use the facility for regional level sports participation and spectating events, as well as those in the other smaller catchments:

- Tweed Shire sporting clubs, associations and school participants in sporting competitions



- Local residents who access the centre for club and association level competitions

It is estimated that in 2013 there are 195,007 people in regional catchment. This is expected to grow to 257,136 by 2031.

Preliminary Draft Only

## The demand for an indoor court sports facility

### What survey respondents said

Eighty eight percent of survey respondents agreed that there was demand for an indoor court facility in Tweed. The majority would prefer to play netball followed by basketball and futsal and would play twice a week. Comments included:

- ***“Wet weather cancelled all sports last summer, we live in a tropical area prone to summer storms, also want to protect ourselves from sun”*** - skin cancers and sunburn (raised 15 times in slightly different ways).
  - ***“The only facilities for competitive basketball are in Queensland*** and there is limited opportunity to play basketball at a competition standard (raised 9 times)”.
  - ***“No affordable indoor venues for kids and youth to play sport and keep healthy”*** (raised 5 times).
- “Tweed is in desperate need of an indoor stadium”*** Male survey respondent, 45-54 years.
- “Bring it on sooner rather than later”.*** Female survey respondent, 35-44 years.

- ***“We need a full time venue for Gymnastics”***, closer to Tweed Heads (raised 2 times)
- ***“There is a need for ways to engage and gainfully occupy young people in the Tweed.”***
- ***“Indoor stadiums are more than just a place for evening social sport. They become central to a community.***
- Built well with the future in mind will attract not just local sport but state and national events. An acquaintance of mine involved in Basketball QLD recently said, "whoever builds a quality 4 court stadium in SE QLD will reap massive rewards."
- ***“Opportunity to use for a variety of sports all year round as well as attract national & international events”***
- ***“Increases hours of use for night time games”***

Thirty percent of people playing indoor sports did so on the Gold Coast.

Most people travel between 10 and 30 minutes to access indoor sports currently.

Thirty percent of people who would use indoor centre, would do so twice per week.

Respondents who did not play indoor sports cited reasons ranging from low availability of facilities, low awareness of activities, and a preference for outdoor activity.

Other comments made relevant to an indoor courts sports facilities made by stakeholders included:

- Consider opportunities to co-locate activities with related facilities and other services
- Include scope for multipurpose use and flexible spaces in indoor sports facilities
- Tallebudgera is currently the only multi-court, timber floored, indoor sports court facility in the region
- There is an inability to grow basketball participation without a multi-court facility capable of hosting a viable competition in Tweed
- People want to participate in more ad hoc ways reflective of different working hours
- Tweed and the surrounding region are expected to experience high growth in the next 20 years
- A lot of people from Tweed currently travel to the Gold Coast to access basketball competitions
- Accessibility through affordable programming is important to include people from low socio economic backgrounds

A summary of findings from the on-line survey is provided as Appendix 2.

## Activities with potential for inclusion an indoor sports centre

Approximately 37% of sport and physical activity in Australia is indoor sports and fitness centres. Without availability of convenient indoor sports court facilities participation in indoor sport in the Tweed Shire is likely to be well below this.

After walking, the next most popular activity group was fitness or gym activities (17%)<sup>2</sup>. More females than males participated in fitness or gym activities (19% and 15% respectively). Fitness or gym activities are most popular for those aged 18–24 years (29%).

Group fitness is very important from females. Women spent more time on sport and indoor physical activity than men (25 minutes compared with 17 minutes per week).

Analysis of the Tweed Shire against New South Wales state participation rate for indoor sporting activities is shown in Table 4.

Participation rates have been determined using data available from the Exercise, Recreation and Sport Survey (Australian Sports Commission 2010) and Sports and Physical Recreation: A Statistical Overview (Australian Bureau of Statistics 2012).

<sup>2</sup> 4156.0 - Sports and Physical Recreation: A Statistical Overview, Australia, 2012

**Table 4: Likely no. of participants in the Shire by indoor sporting activity**

Indoor sporting activity	Estimated participation 2013	Projected participation 2031
Indoor Gym (Aerobics) /fitness	8,358	11,941
Dancing	3,984	5,735
Indoor swimming	3,623	5,190
Yoga	2,531	3,615
Basketball	2,483	3,561
Martial arts	1,898	2,726
Weight training	1,786	2,552
Futsal	1,363	1,951
Netball (indoor)	1,024	1,470
Boxing	989	1,414
Gymnastics	770	1,112
Indoor roller sports	577	839
Volleyball	511	732
Badminton	330	472
Cricket (indoor)	319	457
Table tennis	298	425
Squash/ racquetball	293	419
Tenpin bowling	160	228
Carpet bowls	149	213
Darts	149	213
Rock climbing	149	213
Billiards/ snooker/ pool	74	106
Hockey (indoor)	74	106
<b>Grand Total</b>	<b>26,877</b>	<b>38,525</b>

### Gym/fitness

There is high potential demand for aerobic/fitness activities in the Tweed Shire. However the 2009 feasibility and master plan for Arkinstall Park identified 6 nearby fitness centres providing gym and group fitness programs, weight or circuit training within 5 kilometres of Arkinstall Park.

While there is low need for Council to provide fitness centres that can be provided by the private sector, the demand for a gym for use by regional sports was identified in consultation. A gym facility for use by regional sports teams, and athletes following pathways in indoor sports would be a desirable facility element without unduly influencing the current market.

The advantage of co-locating a gym or fitness centre with indoor courts/ stadium is that it facilitates new participation in particular families with children engaged in indoor sports. The fitness centre also represents an income generating opportunity.

In addition to aerobics and fitness activities, there is significant indicative demand for dancing, yoga and martial arts that can be accommodated in similar studio facilities.

### Dance, yoga and martial arts

Dance activities are available throughout the Tweed Shire. Small, independent providers typically provide these activities. Venues vary from recreation centres to studio space. Dance and yoga typically have high participation rates among females.

The indoor sports centres analysed offered a diverse range of dance classes. In contrast, there are few yoga classes offered in the facilities analysed. It is likely that private operators offer yoga in smaller studios.

Similarly, yoga is offered by providers ranging from recreations centres to private studios, and is commonly delivered by small independent or not for profit providers.

Martial Arts and boxing are provided the PCYC in Tweed Heads, less than 3 kilometres from Arkinstall Park.

A common approach of other public indoor centres is to offer an ancillary space for dance, yoga or martial arts or group fitness. There is also an opportunity to attract commercial providers who could operate out of the indoor sports centre.

### **Aquatics activities**

High potential demand was identified for indoor swimming activities in the Tweed Shire.

Indoor swimming is currently provided at the nearby Tweed Heads Indoor Pool. Incorporating the pool into the regional sports complex is unlikely to provide significant incremental increases in participation if provided in conjunction with such as centre unless additional program pools are provided, although there may be economies of scale in co-locating aquatic facilities and indoor sports courts together.

However it is unlikely that an aquatics venue outdoor spectator football venue, indoor courts sports in addition to stage 1. facility and car parking can be accommodated on the current site.

### **Competition court sports**

Indoor court sports with high potential demand are:

- Basketball
- Indoor netball
- Futsal (as distinct from indoor soccer)
- Volleyball
- Badminton

The analysis of participation in these activities shows high demand for **basketball** club participation, and very limited supply other than more social programs. Feedback from the Tweed Coast Slammers, the Gold Coast Basketball Association, and Basketball NSW confirmed that the lack of indoor courts in the area restrict basketball participation and club development, as well as pathways to other levels of competition.

Tweed Heads basketball players currently play into Queensland competition. Basketball NSW believes that a new facility could stimulate demand for the sport, and like the new Byron facility could enable the development of a club of several hundred players within a few seasons.

The lack of a local multi-court facility is also a barrier to developing a viable competition. The result is that people from Tweed Shire and surrounding areas access basketball competitions in the Gold Coast area of Tallebudgera. Some are deterred from participating due to the constant travel required to attend.

Basketball and netball players were heavily represented in the survey for this project.

There is an opportunity to grow **indoor netball** participation at a competition level. Social indoor netball competitions, played in single court facilities, or multiple court facilities with synthetic surfaces are available in the Tweed Shire. Offering an association level competition at a regional indoor sports centre would fill a gap in the market for higher levels of competition and older women's competition.

The Tweed Shire is host to indoor soccer and **futsal** competitions. The Tweed Super Sports Centre offers indoor soccer played continuously off the nets around the courts.

The Vikings Futsal currently operates its futsal competition from the Seagulls Club indoor centre. There are currently 10 teams playing in this facility however there is some capacity for the sport to grow at the facility.

A multiple court indoor centre presents opportunities increase the number of viable futsal competitions in the Tweed Shire, and provide a full sized court for regional competitions. The current facility is only

These court sports are restricted due to the current lack of multi-court facilities and would benefit from synergy with existing outdoor tenants of Arkinstall Park, netball and soccer.

Smaller format indoor sports including **badminton, volleyball** and **table tennis** have been raised throughout consultation.

The participation analysis shows there is demand for these activities, in particular their appeal to older participants and the ability to draw on the international student population of Southern Cross University, which has campuses at Coolangatta and Tweed.

Table 5 shows the potential participation for priority activities across each market segment in 2013 and in 2031.

Potential participation is determined considering participation rates against the distribution of demographic factors for example age. Potential participation is shown against existing Tweed based club size where information is available.

#### **Gymnastics**

Gymnastics has a strong following in the each of the catchments. In the Tweed Shire, the Gold Coast Gymnastics Club provides gymnastics programs run at the Salvation Army Sports Centre to 250 members.

It is understood that a full time, sports code compliant and quality venue would see growth to 400-600 in the short term with the potential for 1,600 members long term (the current number of members who participate at the clubs full time facility in Miami). There is a growing trend toward participation in some disciplines of the sport that would provide additional recreational opportunities for young people such as trampolining and related activities such as parkour and strapline, as well as "kinder-gym" activities.

To be effective, a space for gymnastics would need to be at least partially purpose built and dedicated to allow for fixed equipment.

Table X, showing further analysis of demand, taking into account the changing age profiles, shows the high opportunities for gymnastics across the catchments.

Demand has the potential to increase to over 8,000 potential participants within 20 kilometres of Arkinstall Park by 2031.

### Priority activities for inclusion in a new indoor sports centre

The activities that will be a priority for inclusion in an indoor sports facility are those that:

- have the highest demand
  - are likely to continue to experience growth (and hence will increase participation in sport), and
- a) complement opportunities currently provided by social enterprises and other providers in Tweed
  - b) do not provide facilities which can typically be provided at a profit by private enterprise
  - c) provide for activities or markets not currently tapped into
  - d) provide for a good balance of activities suitable for both males and females and for people of all abilities
  - e) assist with sports development – ie a pathway from local and social participation into regional sports competition.
  - f) provide other social and economic benefits for residents

Analysis of demand for indoor sports in the Tweed Shire, and consultation with the community has identified priority activities that provide a strategic fit with the current environment and the criteria outlined above.

## The gap in unmet demand and opportunities for indoor sports

Analysis of demand and potential participation identified association competition basketball, indoor netball and futsal, and dance / gymnastics activities, as the highest priority sports for Council to provide in the regional catchment for a facility at Arkinstall Park based on the criteria listed on the previous page.

The existing outlets for these activities were identified as primarily local non-for-profit operated, social programs/leagues in the case of indoor netball and futsal, or small or non-compliant venues for sports competition.

The closest compliant venue for senior competition basketball and indoor netball is Tallebudgera. This is a good quality competition venue, with three courts, however it is some 20 kilometres away, and higher levels of competition players need to regularly travel further north. The opportunity with providing a compliant 3 or 4 court netball court sized venue is to be able to provide a full range of competitions for home and away competitions for basketball, netball and futsal, a pathway from development programs to regional and elite levels of sport, several rounds of country championships and other key events every season, as well as a venue based domestic competition for a range of age groups and all abilities.

A basketball facility in Tweed Heads would enable an association to form and play into a NSW competition – for example, against Byron Bay teams. Convenient access to an international airport means that such a facility is able to provide very competitive costs for a state sports organisation that offers cost equalisation to players in state or country championships.

There were a low number of futsal providers in the Tweed Shire. Most opportunities are “indoor soccer” format (played of nets or walls around courts) or rather than futsal played to netball lines in local competition and a large footprint court at a regional level (and above). There is no venue that can hold regional futsal competitions in the Shire, because of court size.

The futsal competition at the Seagulls did not appear to be widely known about, and it has some additional capacity.

Low availability of indoor facilities was identified as a barrier to participating in indoor sports in the Tweed Shire. However the lack of one central location to find out about opportunities to play and venues appears to be a major issue, as some 15 indoor sports facilities were identified within 20 kms.

The gap in the market that a new facility in Tweed Head could fill is for indoor sports competition including:

- association basketball competitions at development, junior, senior and representative levels for males and females, as well as wheelchair basketball
- association indoor netball for women’s, and day-time ladies levels
- association futsal competitions for juniors and seniors

- a large venue that can host other smaller sports (such as badminton, volley ball, table tennis, roller derby indoor hockey, Paralympic sports) on a regular basis or a one off or regular tournaments
- There is an opportunity in the market for gymnastics. A full time purpose built and dedicated facility will facilitate significant growth in participation.

In addition to association level competitions there is also an opportunity to host country / regional championship games in Tweed Heads, which will also help to foster interest and growth in these sports.

The following tables illustrate the potential number of participant in the larger indoor sports.

In all cases known local participation is significantly lower than current state participation rates.

**Table 5: Potential participants in priority activities for a new indoor sports centre**

Catchment	Region (20km)		Tweed Shire		Local users (2km)	
	2013	2031	2013	2031	2013	2031
Dance	6,199	8,173	2,861	4,110	405	430
Basketball	4,188	5,522	1,758	2,453	243	259
Futsal	1,996	2,632	827	1,152	118	125
Indoor netball	1,832	2,416	774	1,090	107	114
Volleyball	1,759	2,320	714	975	103	109
Gymnastics	1,551	2,045	706	1,012	95	101
Badminton	1,177	1,552	500	700	78	83
Table Tennis	865	1,140	396	568	72	77



### Scale of the proposed indoor sports facility

The most viable form of the facility in the first stage, based on demand and likely revenue generating activities is estimated to include: Three netball sized courts and a dedicated gymnastics hall, in addition to a gym, studio dance/ group fitness and multipurpose room.

In the case of basketball and indoor netball, the lack of current facilities is a key limitation on participation. Three courts were provided would: provide the opportunity to cater to more than one sport, be large enough for one sport such as basketball or indoor netball to be an anchor sport, around which the smaller sports could be tucked around it.

Three courts would be just enough courts for a small tournament such as country basketball championships, or a Waratahs basketball game and enable a show court with spectator seating, for netball, basketball or a full size futsal court to be play across two courts.

A three court facility would enable a basketball association to establish in Tweed Heads – either to continue to play up into Queensland basketball competitions or to establish a NSW Association to play against other NSW clubs at venues such as Byron Bay. A club of some 600 players could be accommodated in a three court facility.

In addition to basketball and netball there is an opportunity to provide a purpose built Gymnastics hall in conjunction with the centre. The advantage of this is to provide a dedicated facility that can utilise the other courts for tournaments. This would enable the development of gymnastics to include a wider range of disciplines, cater to a wider range of individuals and age groups, and provide a greater depth in competition and pathways to higher levels of competition.

Flexible rooms suitable for accommodating a studio space for yoga and dance classes and other group fitness activities is an opportunity to increase participation among a wide range of age groups.

A dedicated gym space would also cater to the local catchment and provide performance training that increase the facility's ability to compete for regional or state/academy level use for training and events.

Table 6. shows the incremental participation that can be achieved by introducing 1, 2,3 or 4 courts for each sport.

**Table 6: Likely numbers of regular participants that can be accommodated in a multiple court facility**

	1 new court	2 new courts	3 new courts	4 new courts
Basketball	176	352	528	704
Futsal	288	576	864	1152
Indoor netball	144	288	432	576
Gymnastics	1,000	na	na	na

The market analysis has identified adequate demand to support a 3 court facility for indoor netball, basketball and futsal.

There are benefits to increasing the diversity of the offer by including 1 purpose built gymnastics space. The demand for gymnastics in Tweed Shire presents a significant opportunity for creating incremental participation.

This would leave 3 courts for other indoor court sports, adequate to meet all local catchment potential and 40% of Tweed Shire potential in 2031.

The residual potential participation for the Tweed Shire catchment is likely to be met by effective programming of the regional indoor court sport facility and backfilling into existing providers who have new capacity created by the consolidation of competition level indoor sports.

The smaller not for profit venues are still likely to be required for training and also social programs, as distinct from club competition sport. Desired components of an indoor court sports facility

Table 7. provides a summary of desirable facility components that would ensure the achievement of participation objectives for the indoor court sports facility in the Tweed Shire.

The indoor courts sports facility should be ensure all activities and amenities are accessible.

The quantity of car parks required will be determined when designing the concept for the regional sports centre as a whole.

Consultation raised the benefit of including an outdoor communal space for meeting and gathering as part of the facility.

**Table 7: Desired components of an indoor sports courts facility in Tweed**

Component	Quantity	Purpose
<b>Timber courts</b>	3	Basketball, futsal and indoor netball competitions
<b>Purpose-built Gymnastics space with pits</b>	1	Dedicated gymnastics competition and programming including recreational
<b>Multipurpose room and studio space</b>	3	Dividable to create team warm up area as well as dance, yoga, martial arts classes
<b>Sports gym</b>	1	Adequate to enable regional level training and casual use
<b>Change facility</b>	Fit for purpose	Adequate to allow 6 teams change preparation simultaneously plus gymnastics
<b>Bathrooms and public toilets</b>	Fit for purpose	Access for people with a disability in – especially showers
<b>Kiosk/ cafe</b>	1	Adequate to service 4 courts simultaneously, as well as the outdoor fields
<b>Storage</b>	Fit for purpose	Adequate to allow for table tennis, volley ball, badminton and some school equipment storage for sports wheelchairs
<b>Seating</b>	200-300	Adequate to view gymnastics events and finals on a 1 or 2 basketball courts  Access for people with a disability in spectator seating
<b>Referees rooms</b>	2	Large enough to accommodate multiple shifts and male/female simultaneously
<b>Air conditioning</b>	1	Required in northern NSW climate an in order to play in both seasons

### ***Additional uses for the indoor court sport facility***

In addition to the primary users of an indoor court sport facility (basketball, futsal and indoor netball) the facility could meet demand for other, non-core, indoor sports programming and tournaments, including:

- Volleyball
- Badminton
- Table tennis
- Roller derby and other skate sports

Flexible spaces adjoining the indoor court sports facility should be geared to providing for:

- Gym and fitness facilities
- Dance, yoga and martial arts studio

There is demand in the Tweed Shire for a multiple court facility for indoor school sports and inter-school sport tournaments. The price of using the facility and the ability of the facility to provide or subsidise transports will be a key determinant in the likelihood of this use.

There is a market for gymnastics events that would use additional courts as overflow for activities.

Opportunities to host overflow training for outdoor netball, an existing tenant of Arkinstall Park can also be explored.

There is high potential demand for roller derby and other skate sports. The Tweed Valley Rollers are based in a private skate facility in Cabarita beach that has a concrete floor that is not suited to competition. The Byron Bay and Tallebudgera indoor sports centres are also used for roller derby. Roller derby should be considered in programming the indoor courts space.

Flexible spaces could also be used to accommodate team warm up and preparation (non-change) for regional events and tournaments.

### **Indicative program of use**

Based on known preferences and typical patterns of use a program of activities for a three court venue and gymnastics hall has been prepared and is shown in Table 8. following.

The proposed program assumes the facility will be aimed at competition and that training for court sports, in particular court sports, will be distributed around existing facilities in the Tweed Shire.

Regional level training for basketball and futsal could be accommodated in non-peak times or early on Saturday or Sunday mornings.

The likelihood of use for Commonwealth Games pre-game training and acclimatisation is low and has not been considered in developing the potential program for the facility. See [Leveraging the 2018 Commonwealth Games](#)

**Table 8: Indicative program for a regional indoor court facility**

Day	Court 1	Flexible space 1
M	Competition indoor netball	Dance classes
T	Competition senior basketball	
W	Competition junior futsal	
T	Competition senior futsal	
F	Competition junior basketball	
S	Volleyball	
S	Competition senior basketball or futsal	
Day	Court 2	Flexible space 2
M	Competition indoor netball	Yoga / Pilates
T	Competition senior basketball	
W	Competition junior futsal	
T	Competition senior futsal	
F	Competition junior basketball	
S	Badminton	
S	Competition senior basketball or futsal	
Day	Court 3	Flexible space 3
M	Competition indoor netball	Movement / Martial arts
T	Competition senior basketball	
W	Competition junior futsal	
T	Competition senior futsal	
F	Competition junior basketball	
S	Table tennis	
S	Competition senior basketball or futsal	
Day	Court 4	
All	Gymnastics	

## Likely benefits of the indoor court sports facility

The development of an indoor court sports facility is expected to provide benefits for the Tweed Shire community including:

- facilities that are purpose built and sports code compliant for local and regional competitions for basketball, futsal, gymnastics and indoor netball
- a focus for indoor sports that is more easily marketed to potential participants, and more cost effective for clubs to use than multiple small independent venues
- increasing participation and depth in competition indoor sports activities from grass roots to regional level, and increasing young players exposure to competition sport
- provision of a pathway for sports participants from development programs local to higher levels of competition within the Tweed Shire, in additional all abilities and masters level competitions
- ability to fill a gap in indoor sports facilities and associations in the Far North Coast, that would enable additional inter facility tournaments (for example with Byron Bay)
- an opportunity to host events and competition games at a home court, and to market to tournaments because of the close proximity to the Gold Coast international airport, and price competitiveness of flights to this destination
- ability to provide a full season of competition without impact by rain or sun
- an opportunity to provide additional space for providers of group fitness, movement, dance, martial arts and yoga activities that can target young people and older adults, and especially female participants
- co-location of gym and fitness space with indoor court sports and outdoor netball and tennis activities
- capacity for club development for indoor sports
- opportunities for employment of young people in facility management, administration, programming and coaching roles. For example through Basketball NSW's IMG internship system
- increased opportunities to promote volunteerism through program administration and facility and club operations

## Outdoor football spectator venue

### Demand for an outdoor football spectator venue

Seventy five percent of respondents to the on-line survey would be interested in attending outdoor regional events in some capacity.

To establish the demand for an outdoor football spectator venue, the market analysis has considered participation in the sports likely to use the stadium for events, the availability of venues for regional competitions, as well as the likely spectator market for those events.

Demand for sports using the outdoor football spectator venue is most likely to come from **soccer**, followed by **rugby union**, **rugby league** and **touch football**.

The Tweed United Football Club (soccer) has a strong membership base and currently uses all available pitch space at Arkinstall Park, including junior pitches. The carrying capacity of the existing pitches is limited by the lack of lights.

A reduction in the number of pitches will impact on the clubs operation at Arkinstall Park, however the introduction of lights to any outdoor fields in the new development may offset this to a degree.

Of the football sports analysed, **Rugby League** has the highest rate of attendance at events in 2009-10 (8.9% and decreasing from 9.3% in 2006) compared to outdoor soccer (5.4% and growing from 3.5% in 2006) and rugby union (3.3% and decreasing from 4.3% in 2006).

Seventy five percent of the online survey respondents would be interested in attending outdoor regional events in some capacity.

Australian Rules Football has the highest rate of event attendance (16.2% and increasing from 15.8% in 2006)<sup>3</sup> Australian Rules Football requires an oval field and has not been further analysed.

Table 9 shows the indicative participation of outdoor sporting activities in the Tweed Shire.

**Table 9: Potential number of participants in selected outdoor sports and physical activities in the Tweed Shire**

	Likely participants 2013	Projected participants 2031
Outdoor Aerobics/fitness	13,373	19,105
Soccer	7,127	10,237
Outdoor roller sports	5,201	7,554
Tennis	5,792	8,292
Golf	5,743	8,206
Touch football	3,468	4,960
Cricket (outdoor)	3,014	4,318
Rugby league	2,272	3,263
Netball (outdoor)	2,048	2,940
Lawn bowls	1,712	2,446
Australian Rules football	1,545	2,214
Rugby union	1,119	1,604
Hockey (outdoor)	915	1,310
Athletics/track and field	800	1,150
Softball	427	613
Baseball	299	428

<sup>3</sup> 4156.0 - Sports and Physical Recreation: A Statistical Overview, Australia, 2012

## Potential use of an outdoor football spectator venue

Some detailed consideration needs to be given to numbers of seats and numbers of pitches that are most viable given Tweed Heads unique positioning close the Queensland border but some distance from other centres in NSW.

The far north coast is a difficult area because many clubs play into Queensland not NSW, and because of the long distance to other associations to compete against. The Far North Coast Football Association for example does not include Tweed Heads, the most northerly location in that association is Pottsville.

There may not be a demand for the large number of spectator seats suggested in previous feasibility studies.

The most suitable number of spectator seating for the level of competition, in relation to other facilities in the Shire and the number of additional pitches beyond the main spectator ground required that would make the facility viable and appealing for tournaments, needs careful consideration.

Football Northern NSW advises that 2 main playing pitches and two training/ warm-up pitches would be required to attract tournaments. They advise that the best type of pitch for the location would be synthetic to enable sharing by multiple codes and due the impact of rain on football codes in recent years. There has been a reduction in demand for football by approximately 5% due to rain, over the last three years and the number of ground closures due to weather.

In terms of the likely number of spectators for the level of game (regional and finals) such a stadium is likely to attract, some 500 seats may be sufficient.

If the potential use of the outdoor football spectator venue is determined based on analysing the demand for sports likely to use the stadium and potential spectator attendance to events the likely number of spectators is higher.

Table 10 and 11 show the potential use of an outdoor football spectator venue in Tweed by the identified catchments in 2013 and 2031.

A further consideration is that the construction of the outdoor football spectator venue is likely to reduce the space allocated to usable soccer pitches at Arkinstall Park. This will potentially impact continuing viability of the location for this growing club.

Multiple pitches (two main grounds and 2 for warm up/ practice) 4 in total) are necessary to attract tournament use by soccer and rugby for events including grand final or finals weekends country championships and regional or representative playoffs.

Multiple pitches are also important in ensuring the facility can be used for regional school carnivals and state and national university games events.

Respondents to the community survey indicated the main uses of a football stadium should be:

- Soccer (raised 17 times)
- Cultural expos / regional carnivals / music events (raised 15 times)
- School carnivals and interschool sporting events (raised 5 times)
- Rugby League (raised 5 times)
- AFL (raised 5 times)
- Rugby Union (raised 4 times)
- Athletics (raised 4 times)
- Midweek markets (raised 2 times)

Based on discussions with stakeholders Potential uses for the outdoor football spectator venue are:

- NSW Youth championships (1 per year)
- Regional soccer grand final weekend (1 per year)
- Representative Rugby Union carnivals (1 per year)
- Rugby union finals and grand finals (over the finals period annually)
- Rugby Union representative games (for example against the Gold Coast Breakers)
- School rugby, soccer and touch

Convenient access to an international airport is a major benefit of Arkinstall Park over other facilities such as Coffs Harbour International Sports Precinct, due to the cost to State bodies flying players in there.

**Table 10: Potential use of an outdoor football spectator venue in Tweed in 2013**

	Potential use	Potential use	Potential use
	Total market	Tweed Shire	Local users
<b>Participants</b>			
Soccer	9,139	4,008	521
Touch football	4,612	1,881	268
Rugby (league)	2,265	1,032	132
Rugby (union)	1,393	624	83
<b>Spectators</b>			
Rugby (league)	14,310	6,625	1,185
Soccer	8,683	4,019	719
Rugby (union)	5,306	2,456	439
<b>Total</b>	<b>37,893</b>	<b>20,645</b>	<b>3,347</b>

**Table 11: Potential use of an outdoor football spectator venue in Tweed in 2031**

	Potential use	Potential use	Potential use
	Total market	Tweed Shire	Local users
<b>Participants</b>			
Soccer	12,050	5,682	554
Touch football	6,081	2,613	286
Rugby (league)	2,987	1,457	140
Rugby (union)	1,837	882	89
<b>Spectators</b>			
Rugby (league)	18,870	9,464	1,261
Soccer	11,449	5,742	765
Rugby (union)	6,997	3,509	467
<b>Total</b>	<b>60,271</b>	<b>29,367</b>	<b>3,562</b>

The Tweed Shire and the region catchments are large enough to support a regional stadium at the site both a participation and spectating view.

The ability to play multiple fields at once will be important in attracting events that may otherwise be held in Carrara, which has 9 fields, or Crozier Field in Lismore, where there are 2 fields.

### Likely benefits of the outdoor football spectator venue

The introduction of an outdoor football spectator venue is expected to provide benefits for the Tweed Shire community including:

- a pathway for sports participants from local to higher levels of competition within the Tweed Shire (this facility would be the top level for football in the Shire)
- increasing economic inflow from potential events and tournaments (although these may be infrequent)
- increasing the profile of the Tweed Shire as a location for regional sports activities
- ability to partner with indoor court sports facility to provide indoor and outdoor events simultaneously
- opportunities for advertising and sponsorship by the local business community
- an additional attraction for employers in the Shire in being able to attract employees away from metropolitan areas

### Desired components for an outdoor football spectator venue

The community survey asked, “What makes a good football stadium?” Responses included the following:

- Enough seating for spectators, comfortable and accessible (raised 22 times)
- Well maintained facilities (i.e. clean toilets, showers, change rooms etc....) (raised 6 times)
- Correct soil / ground cover / playing surface (raised 6 times)
- Parking (raised 4 times)
- Multi functional (raised 3 times)
- Good lighting (raised 3 times)
- Café / food outlets (raised 3 times)
- Elevated seating and shaded from the elements (sun and rain) (raised 2 times)
- Proximity to the field
- Cheap / affordable

Table 12 provides a summary of the desirable components for the outdoor stadium to be developed as part of the regional sports centre.



Accessibility, car parking and community gathering considerations should be consistent between the indoor and outdoor components of the regional sports centre.

**Table 12: Desired components of an outdoor football spectator venue in Tweed**

Component	Quantity	Purpose
Full size football pitches	4	Grass suitable for soccer, rugby league, rugby union and touch
Grandstand seating	Up to 2,000	Suitable for regional events and tournaments
Change facility	Fit for purpose	Adequate to allow 6 teams change preparation simultaneously plus gymnastics
Bathrooms and public toilets	Fit for purpose	Adequate for facility size
Kiosk	1	Adequate to service up to 500 (2,000?) spectators
Referees rooms	2	Large enough to accommodate multiple shifts and male/female simultaneously
Floodlighting	Fit for purpose	Allow for night time competition on 3 pitches simultaneously 300 Lux

## Leveraging the 2018 Commonwealth Games

### Commonwealth Games use of a regional sports centre in Tweed

Consultation identified that while ineligible as an event venue for the 2018 Commonwealth Games in the Gold Coast, potential opportunities to leverage the Games into facility use are pre-games training and acclimatisation.

The limited opportunities are due to in-game events venues being mostly pre-determined and needed to be within 20 minutes drive of the Village. This makes Robina is an outer limit of area for Commonwealth Games host venues.

Tweed Shire would need to seek pre-games opportunities independently of the organisation of the Commonwealth Games

#### Indoor events

Key Indoor courts sports for the Games include: Badminton, boxing, netball (women), squash, and weight lifting. Optional sports are table tennis, basketball, gymnastics and wrestling. Para-Sports are powerlifting, table tennis and wheelchair basketball.

#### Outdoor events

Key sports that could be played in the outdoor football spectator venue include Rugby Sevens.

#### Likelihood of Commonwealth Games use

It is unlikely that the Regional Sports Centre will be available in time to seek pre-games arrangements.

This means Commonwealth Games use is not a practical consideration for Stage 2. F Arkinstall Park.

## Appendices

1. Demographic tables for the Tweed Shire
2. Online Survey Findings
3. List of organisations contacted
4. Summary of likely competing/other indoor sports facilities

Preliminary Draft Only

## Appendix 1: Demographic information for the Tweed Shire

**Table 1: Tweed Shire Population Forecasts<sup>4</sup>**

Age structure	Number 2013	% 2013	Number 2031	% 2031	Change 2013 to 2031
0-4 years	5,019	5.6	6,918	5.4	1,899
5-9 years	5,351	5.9	7,696	6	2,345
10-14 years	5,393	6	7,915	6.1	2,522
15-19 years	5,302	5.9	6,929	5.4	1,627
20-24 years	4,333	4.8	5,638	4.4	1,305
25-29 years	4,083	4.5	5,802	4.5	1,719
30-34 years	4,511	5	6,969	5.4	2,458
35-39 years	4,939	5.5	7,931	6.2	2,992
40-44 years	5,895	6.5	8,218	6.4	2,323
45-49 years	5,722	6.3	8,074	6.3	2,352
50-54 years	6,601	7.3	7,806	6.1	1,205
55-59 years	6,385	7.1	8,186	6.4	1,801
60-64 years	6,020	6.7	8,596	6.7	2,576
65-69 years	5,829	6.5	8,792	6.8	2,963
70-74 years	4,612	5.1	8,366	6.5	3,754
75-79 years	4,089	4.5	6,649	5.2	2,560
80-84 years	3,169	3.5	4,747	3.7	1,578
85+ years	2,943	3.3	3,631	2.8	688
<b>Total</b>	<b>90,196</b>	<b>100</b>	<b>128,863</b>	<b>100</b>	<b>38,667</b>

<sup>4</sup> Tweed Shire Forecast id (downloaded June 2013)

**Table 2: Tweed Shire Gender Forecasts<sup>5</sup>**

	2013	%	2031	%
<b>Males</b>	44,026	49%	64,168	50%
<b>Females</b>	46,169	51%	64,696	50%
<b>Total</b>	<b>90,195</b>	<b>100%</b>	<b>128,864</b>	<b>100%</b>

**Table 3: Tweed Shire Household Type Forecasts<sup>6</sup>**

	Number 2013	% 2013	Number 2031	% 2031	Change 2013 to 2031
<b>Couples without dependents</b>	13,210	34.6	19,304	35.3	6,094
<b>Couple families with dependents</b>	8,814	23.1	12,840	23.5	4,026
<b>One parent family</b>	4,413	11.6	6,022	11	1,609
<b>Other families</b>	758	2	1,056	1.9	298
<b>Lone person households</b>	9,680	25.4	13,798	25.2	4,118
<b>Group households</b>	1,252	3.3	1,702	3.1	450
<b>TOTAL</b>	<b>38,127</b>	<b>100</b>	<b>54,722</b>	<b>100</b>	<b>16,595</b>

<sup>5</sup> Tweed Shire Forecast id (downloaded June 2013)

<sup>6</sup> Tweed Shire Forecast id (downloaded June 2013)

**Table 4: Tweed Shire Individual Income Quartiles 7**

2011			2006			Change	
Quartile group	Number	%	Regional NSW	Number	%	Regional NSW	2006 to 2011
Lowest group	16,374	25.4	24.7	15,097	25.6	25.9	+1,277
Medium lowest	22,111	34.4	30.6	20,354	34.5	30.6	+1,757
Medium highest	16,348	25.4	25.5	15,181	25.7	25.2	+1,167
Highest group	9,525	14.8	19.2	8,379	14.2	18.3	+1,146
Total persons aged 15+	64,360	100.0	100.0	59,013	100.0	100.0	+5,348

**Table 5: Tweed Shire Employment status 8**

2011			2006			Change	
Employment status	Number	%	Regional NSW	Number	%	Regional NSW	2006 to 2011
Employed	32,666	91.7	93.9	29,259	92.9	92.9	+3,407
Employed full-time	17,496	49.1	56.7	16,448	52.2	56.5	+1,048
Employed part-time	14,400	40.4	35.0	11,913	37.8	33.8	+2,487
Hours worked not stated	770	2.2	2.1	898	2.9	2.6	-128
Unemployed	2,938	8.3	6.1	2,238	7.1	7.1	+700

7 Australian Bureau of Statistics, Census of Population and Housing 2006 and 2011. Compiled and presented in profile.id

8 Australian Bureau of Statistics, Census of Population and Housing 2006 and 2011. Compiled and presented in profile.id

2011			2006			Change	
Looking for full-time work	1,831	5.1	3.8	1,404	4.5	4.6	+427
Looking for part-time work	1,107	3.1	2.4	834	2.6	2.5	+273
Total Labour Force	35,604	100.0	100.0	31,497	100.0	100.0	+4,107

**Table 6: Tweed Shire Car Ownership9**

2011			2006			Change	
Number of cars	Number	%	Regional NSW	Number	%	Regional NSW	2006 to 2011
No motor vehicles	2,760	7.7	7.6	2,953	8.8	9.0	-193
1 motor vehicle	14,963	41.7	36.0	14,602	43.6	37.3	+361
2 motor vehicles	11,408	31.8	34.4	9,815	29.3	33.3	+1,593
3 or more motor vehicles	4,287	11.9	15.5	3,580	10.7	13.7	+707
Not stated	2,467	6.9	6.5	2,567	7.7	6.8	-100
Total households	35,885	100.0	100.0	33,517	100.0	100.0	+2,368

9 Australian Bureau of Statistics, Census of Population and Housing 2006 and 2011. Compiled and presented in profile.id

## Appendix 2. Summary of findings on-line survey

Numbers of responses and comments received are provided below by question.

1a. Do you think there is demand for a new indoor sports centre in Tweed?	
Yes	98
No	13
<b>Grand Total</b>	<b>111</b>

### 1a. Do you think there is demand for a new indoor sports centre in Tweed? Please explain:

Responses included:

- The only facilities for competitive basketball are in Queensland and there is limited opportunity to play basketball at a competition standard (raised 9 times).
- The netball facility is so out of date and lacks the ability to attract interstate and international participants. There is currently no publically owned indoor facility for training for netball in the area (raised 9 times).
- No affordable indoor venues for kids and youth to play sport and keep healthy (raised 5 times).
- It could be used for numerous events not only sports but concerts or exhibitions if the size and design are right (raised 3 times).
- We need a full time venue for Gymnastics, closer to Tweed Heads (raised 2 times)
- There is a need for ways to engage and gainfully occupy young people in the Tweed.

- The clubs have access to indoor sports facilities - provided by private sector
  - Wet weather cancelled all sports last summer, we live in a tropical area prone to summer storms, also want to protect ourselves from sun - skin cancers and sunburn (raised 15 times in slightly different ways).
  - Indoor stadiums are more than just a place for evening social sport. They become central to a community. Built well with the future in mind will attract not just local sport but state and national events. An acquaintance of mine involved in Basketball QLD recently said, "whoever builds a quality 4 court stadium in SE QLD will reap massive rewards."
  - Opportunity to use for a variety of sports all year round as well as attract national & international events
    - Increases hours of use for night time games
    - A lot more kids are looking for after school safe activities.
    - There's no opportunity for kids (or adults) to try many indoor sports such as squash, badminton, trampolining, basketball. A public facility to hire courts for use for various sports are limited in the area.
  - The region needs a 50m swimming pool that can be used for competitions / water polo / underwater hockey and swim carnivals.
  - We are looking for a sports facility with a wooden floor to play Roller Derby.
- Some respondents thought that there were sufficient sports facilities in provided in Tweed, however these was the minority:
- There is an indoor sports centre at Chinderah and I don't think the area has enough demand for two facilities

- No demand for an indoor sports centre in Tweed. We have one at Chinderah, Banora Point and a struggling one at Seagulls.

1b. Do you think there is demand for a regional outdoor rectangular football stadium in Tweed?	
Yes	62
No	46
<b>Grand Total</b>	<b>108</b>

2a. Are you likely to use:   A new indoor sports facility in Tweed?	
No	20
Yes	92
<b>Grand Total</b>	<b>112</b>

2b. Are you likely to use:   A regional football stadium in Tweed?	
No	74
Yes	36
<b>Grand Total</b>	<b>110</b>

**2. Are you likely to use: A new indoor sports facility in Tweed and / or a regional football stadium in Tweed? If NO, please explain why:**

- I like motor sports - sadly not catered for in Tweed
- There are enough outdoor sports areas.
- Senior and peacefully retired.
- Live rural & away from Tweed Heads
- Not interested in football, more interested in high cost of rates already in comparison to other states.
- Tweed needs other facilities badly before football stadiums are to be considered
- We do not have the population to sustain these facilities
- My family enjoys activity and would like to see more affordable activities in the area.
- Do not live locally or involved in sports that would use the facility
- There are many facilities for football in the area

**3a. Do you currently use any indoor sports facilities?**

Yes (If yes, go to 4b.)	60
No (if no, why?)	43
<b>Grand Total</b>	<b>103</b>

**3a. Do you currently use any indoor sports facilities?**

- No indoor facilities in Tweed area (raised 10 times)
- Prefer the outdoors (raised 3 times)
- Recently moved to the area (raised 2 times)
- There are none available that suits the purpose of a large netball association with approximately 800 members
- Plenty of other things to do
- We recently closed our gym membership due to costs for a family.
- No I don't currently but have done in my earlier years playing volleyball and indoor cricket. A decent sized centre could service the southern Gold Coast as well.
- I am a spectator
- I used to play indoor cricket and beach volleyball at Chinderah, however time doesn't permit at present (raised 2 times)

**3b. What indoor sporting activities do you current participate in?**

Basketball	24
Netball	17
Swimming	9
Futsal	4
Gymnastics	3
Cricket	1
<b>Grand Total</b>	<b>58</b>

**3b. What other indoor sporting activities do you current participate in?**

- Roller Derby (raised 5 times)
- Badminton (raised 3 times)
- Squash (raised 2 times)
- Adapted sports for people with a disability (raised 2 times)
- Gym (raised 2 times)
- Swimming
- Tennis
- Yoga
- Table Tennis
- Dance

3c. How often do you play indoor sports each week?	
Once per week	22
Three times per week	17
Less than once per week	16
Twice per week	13
More than three times a week	4
<b>Grand Total</b>	<b>72</b>

3d. Where do you currently play indoor sports?	
Other - Tweed	21
Other - Gold Coast	19
Tweed Super Sports	7
Other - South of Tweed	6
Other - North of Tweed	5
Salvation Army Tweed Centre	3
Byron Regional Sport and Cultural Complex	1
Parklands Indoor Sports Centre (Gold Coast)	1
<b>Grand Total</b>	<b>63</b>

3e. How do you get there? (regularly)	
Car	60
Other (please specify)	4
Ride	2
Public Transport	1
Walk	1
<b>Grand Total</b>	<b>68</b>

3f. How long does it take you? (on average)	
10-20 minutes	18
20-30 minutes	17
30 minutes to 1 hour	16
Under 10 minutes	13
Over 1 hour	2
<b>Grand Total</b>	<b>66</b>

3g. How much do you currently pay (at the venue) to play indoor sports?	
Over \$10.00	20
\$7.00 to \$10.00	17
\$3.00 to \$5.00	10
\$5.00 to \$7.00	9
\$0.00 to \$3.00	8
<b>Grand Total</b>	<b>64</b>

3h. How much do you spend on food and drink at the canteen facility when you play indoor sports?	
\$0.00 to \$3.00	27
\$3.00 to \$5.00	16
\$7.00 to \$10.00	11
\$5.00 to \$7.00	7
Over \$10.00	3
<b>Grand Total</b>	<b>64</b>

4. What indoor sporting activities would you like to participate in at the Regional Sports Centre?	
Netball	24
Basketball	19
Futsal	5
Cricket	4
Gymnastics	4
Swimming	4
Badminton	2
Volleyball	2
Other (non-sporting)	1
<b>Grand Total</b>	<b>65</b>

5. How often would you like to play indoor sports each week at the Regional Sports Centre?	
Twice per week	26
Once per week	24
Three times per week	17
More than three times per week	7
Less than once per week	3
<b>Grand Total</b>	<b>77</b>



**6. Which of the following most accurately reflects how you would use the indoor facility?**

I would transfer my existing activities to the new facility if possible	49
I would use the new facility in addition to my existing activities	20
I would be unlikely to use the new facility	7
<b>Grand Total</b>	<b>76</b>

**7. Would you use an outdoor forecourt or gathering space if it were available at the entrance to the facility?**

Yes	59
No	18
<b>Grand Total</b>	<b>77</b>

**8. Tell us about what you'd like to see at a new indoor sports centre in Tweed**

- Young people using the space, engaged with the space and looking after it.
- Indoor motocross
- Tamworth and Raymond Laurie Sports Centre (Yamba) is a leading example of how a stadium should be built. It also doubles as a community centre and conference centre.

**Indoor Sports:**

- 3-4 full size basketball courts that could also be used for netball and futsal (raised 5 times). Netball (17 times) basketball (raised 15 times) futsal (8 times), volleyball (1 time)
- Small facility rooms for yoga (raised 3 times), gymnastics (raised 6 times), Pilates, martial arts

- Lap pool / swimming pool (raised 4 times)
- Roller Derby (raised 3 times)
- Indoor cricket (raised 2 times)
- An indoor netball court arena with seating for 800 spectators
- Gym / weights
- Volleyball
- Table tennis
- Badminton
- Squash
- Tennis courts

**Facility components:**

- No indoor facilities in Tweed area (raised 10 times)
- Canteen / catering facilities (raised 8 times)
- Grandstand seating (raised 6 times)
- Café (raised 5 times)
- Toilets, showers and change room facilities (raised 5 times)
- Sufficient car parking to meet demand at peak times (raised 4 times)
- Affordable facility (raised 4 times)
- Physio rooms (raised 3 times)
- Child care facility (raised 3 times)
- Meeting / function room (raised 2 times)
- A location that is suitable for people with disability that has a large sized disability toilet / change room, ramps to get in/out of the venue and plenty of disability parking spots (raised 2 times)
- Adult social sporting competitions

- Blow dryers / hair straighteners provided in change rooms
- Lockers for hire
- Roof top solar and water saving installations
- Electronic scoreboard, change rooms with showers, gym
- Good functional / flexible seating for use at various events
- Accessibility for all, multiple sports, gym, sufficient run off area to attract media to big ticket events as well as local events
- Sauna / spa area
- Professional lighting and rigging, dressing rooms sound system and commercial kitchen

**9a. Are you likely to attend any regional events at a rectangular stadium?**

I would attend regional events every now and again	32
I would attend regional events regularly	22
I'm not interested in attending regional events	22
I would go once to check the stadium out	13
<b>Grand Total</b>	<b>89</b>

**9b. What events do you think could be staged at a regional stadium?**

- Soccer (raised 17 times)
- Cultural expos / regional carnivals / music events (raised 15 times)
- Netball (raised 9 times) and state championships
- Hockey (raised 6 times)
- School carnivals and interschool sporting events (raised 5 times)
- Rugby League (raised 5 times)
- AFL (raised 5 times)
- Rugby Union (raised 4 times)
- Athletics (raised 4 times)
- Midweek markets (raised 2 times)
- Crusty Demons, Nitro Circus
- International sports – being close to airport, good not to have to travel to Brisbane.
- Horse riding
- Gymnastics
- Basketball
- Volleyball
- Touch football
- Oztag (state cups)
- Motocross
- Roller Derby

**10. What other facilities should be provided in conjunction with an indoor and football stadium at Arkinstall Park?**

- Coffee Shop (raised 7 times)
- Parking, public transport and disability access (raised 5 times)
- Canteen (raised 5 times)
- Skate park / climbing walk / youth facilities (raised 3 times)
- Gym (raised 3 times)
- Gymnastics (raised 2 times)
- Hockey (raised 2 times)
- Physio rooms (raised 2 times)
- Spectator seating (raised 2 times)
- Squash courts (raised 2 times)
- Function room
- Childcare
- Outdoor playground
- Lockers
- Showers, toilets, change rooms
- Swimming pool
- Coaching facilities
- Bicycle track
- Ice skating rink

**11a. What makes a good indoor courts sports facility?**

- Seating for spectators / viewing areas (raised 12 times)
- Good flooring and lighting (raised 10 times)
- Parking facilities and accessibility (raised 7 times)
- Good ventilation and air conditioning (raised 8 times)
- Showers, toilets and change rooms (raise 5 times)
- Cater for multiple sports (raised 5 times)
- A complex that has the opportunity to be used 7 days a week (raised 4 times)
- Affordability (raised 3 times)
- People who use it feeling some ownership and therefore looking after Multi purpose rooms (raised 3 times)
- A good canteen open hours that centre is used with good healthy food (raised 3 times)
- Well run competitions (raised 3 times)
- Good storage (raised 2 times)
- Right management model used (raised 2 times)
- The space when they are there (raised 2 times)
- Low maintenance cost (raised 2 times)
- Scoreboards
- To attract national customers you need a quality stadium, not a 2 court stadium
- Gym

- Easy access by foot, bike and public transport
- Large foyer

**11b. What makes a good football stadium?**

- Enough seating for spectators, comfortable and accessible (raised 22 times)
- Well maintained facilities (i.e. clean toilets, showers, change rooms etc....) (raised 6 times)
- Correct soil / ground cover / playing surface (raised 6 times)
- Parking (raised 4 times)
- Multi functional (raised 3 times)
- Good lighting (raised 3 times)
- Café / food outlets (raised 3 times)
- Elevated seating and shaded from the elements (sun and rain) (raised 2 times)
- Proximity to the field
- Cheap / affordable

**14. Is there anything else you would like to add regarding the Regional Sports Centre?**

- Please build it and the players will come (raised 5 times)
- Keep the running costs low (raised 4 times)
- Long overdue / this region needs a Regional Sports Centre (raised 3 times)
- Tweed have other priorities such as bus shelters outside Centro, basic facilities, maintaining local parks (raised 3 times)
- Emphasis on youth needs and encourages youth to remain active and stay away from alcohol and drugs (raised 2 times)
- Add a 50m swimming pool (raised 2 times)
- Tweed is in desperate need of an indoor Stadium. Basketball is one of the fastest growing sports on the coast. Tweed already has a junior basketball club in the Slammers and having a purpose built Stadium would enable the club to grow and introduce men and women's competitions that Tweed is screaming for.
- Simply, my playing days are over. But through a lot of hard work, time and lots of money we managed to get have our son represent NSW in school boys basketball last year. This is despite coming from a town (Murwillumbah) with next to no facilities.

- Training was at TSS for the Gold Coast team. Competition was at Carrara, both poor examples of a decent stadium. We sacrificed a lot. But many kids miss out on these opportunities constrained by time and most importantly, money. As the saying goes, 'build it and they will come.' But it has to be managed well and priced reasonably
- We are desperately in need of the indoor facility. It would give us the opportunity to host events and competition games at a home court
- Amazing opportunity for junior & senior sport in Tweed and surrounding areas as well as nationally & internationally attractive
- This facility could be also incorporated as a 'form up point' for emergency accommodation in the event of a disaster, thus the need for a kitchen and suggest a generator to be included as long as the facility is flood proof.
- We are currently paying around \$40,000 per annum to hire a venue for Roller Derby, which has a concrete floor. With this type of flooring the members sustain injuries that would not be caused by a venue with a wooden floor. Roller Derby is the fastest growing sport in Australia for both men and women.

**Age and gender of survey respondents**

Survey demographics	Female	Male	Did not say	Grand Total
45-54 years of age	14	10	1	25
35-44 years of age	17	5		22
25-34 years of age	14	5	1	20
55-64 years of age	4	3	1	8
20-24 years of age	3	2		5
15-20 years of age	1	2		3
Over 65 years of age	1	2		3
Did not say			42	42
<b>Grand Total</b>	<b>54</b>	<b>29</b>	<b>45</b>	<b>128</b>

Preliminary Draft Only

### Appendix 3: List of organisations contacted

<b>Clubs and associations</b>	<b>Peak bodies</b>
Futsal Far North Coast (Vikings)	Basketball NSW
Gold Coast City Regional Basketball Association	Far North Coast Rugby Union
Gold Coast Gymnastics Club Inc.	Football Far North Coast
North Coast Academy of Sport	Football Gold Coast
North Coast School Sports Association	Netball Queensland
Tweed Coast Slammers Basketball Club	Sport & Recreation NSW
Tweed Heads Tennis Club	Sport & Recreation QLD
Tweed Netball Association	
Tweed United Football Club	<b>Education</b>
<b>Community organisations</b>	Banora Point High School
Destination Tweed	Banora Point Primary School
Tweed Chamber of Commerce and Industry Inc.	Lindisfarne Anglican Grammar School Primary
Tweed District Residents and ratepayers	Lindisfarne Anglican Grammar Secondary School
<b>Council</b>	Mt St Patrick College Murwillumbah
Tweed Shire Council	Murwillumbah High School
<b>Other Councils</b>	Murwillumbah Primary School
Gold Coast City Council	Pacific Coast Christian Schools
<b>Facilities</b>	Southern Cross University Gold Coast Campus (Coolangatta)
Byron Bay Sports and Cultural complex	St Joseph's College
Carrara Indoor Stadium	St Joseph's Primary School
Cornubia Park Sports Centre	Tweed Heads Public School
Ozsports Burleigh	Tweed Heads South Public School
Palm Beach Currumbin High Indoor Sports Facility	Tweed River High School
Paramount Adventure Centre	Tweed Valley Adventist College
PCYC Tweed Heads	
Runaway Bay Sports Super Centre	
Seagulls Club	
Tallebudgera Sports Centre	
Tally Valley Indoor Sports Centre	
The Tweed Super Sports and Community Centre Chinderah.	
Tweed Heads / Banora Point Sports Centre (Salvation Army)	

## Appendix 4: Details of existing indoor sports facilities

**Table 7: Details of indoor sports facilities**

Venue	Number of courts	Kilometres from Arkinstall Park	Owner / operator type	Court surface	Indoor activities	Fees and charges
South Tweed Sports	Played in large auditorium	1	Private	Timber Carpeted	Table Tennis Darts Pool / snooker Indoor Bowls	Social membership 1 year \$10 Bowling club membership 1 year \$85
Tweed Heads Indoor Pool	Pool	1	Tweed Shire Council	Pool	Swimming	\$4 daily casual use
Tweed Iyengar Yoga Centre	1	1	Private	Timber	Yoga	Beginner / general class \$15 / \$18 (6 week course \$80) General / experienced class \$20
Tweed River High School	1	1	School	Timber	Indoor netball School activities	Free for local schools and netball competitions
Tweed Heads South Public School	General multi purpose hall	1	School	Timber	School use Zumba class (once) Fisheries workshop (once)	Has been free so far
Coolangatta-Tweed Tenpin Bowling Centre	16 lanes	3	Private	Timber	Tenpin bowling	\$12.95 per adult per game
PCYC Tweed Heads	1	3	Not-for profit	Timber	Aerobics and fitness Dancing, Basketball, Martial arts, Weight training, Boxing, Gymnastics, Badminton, Lifeball	Most activities are between \$5 and \$10 per session
Epic Skate Rink NSW	1	3.1	Private	Concrete with synthetic	Roller Derby, In-line skate, birthday parties	\$15 over 18yrs and \$8 >12yrs
Tweed Head Bowls Club	8	4	Private	Synthetic turf	Lawn bowls	Casual: \$20 per team
Tweed Heads Public School	General multi purpose hall	4	School	Timber	Dance group	Have charged \$28 / hr in the past
Banora Point Primary	General multi purpose hall	5	School	Timber	Dancing, Martial arts Indoor soccer	Depends on group
Tweed Heads / Banora Point Sports Centre (Salvation Army)	1	5	Not-for profit	Timber	Aerobics and fitness Gymnastics Carpet bowls	\$4 to \$8 for non gymnastics classes
The Tweed Super Sports and Community Centre, Chinderah	3	6	Not-for profit	Synthetic turf	Indoor soccer Indoor netball Indoor cricket Beach volleyball	For users: \$5/\$7.5 per child (non peak/peak) \$7.50/\$10 per adult (non-peak/peak) Hourly court hire: \$50 / \$75 (non-peak/peak) \$85 on Sunday. \$500 for whole facility per afternoon
Seagulls Club	2	6	Private	Synthetic	Futsal	1 year membership \$10

Venue	Number of courts	Kilometres from Arkinstall Park	Owner / operator type	Court surface	Indoor activities	Fees and charges
<b>Palm Beach Currumbin High Indoor Sports Facility</b>	1	12	School	(rubber) Timber	Indoor netball Basketball Netball	Not known
<b>Tally Valley Indoor Sports Centre</b>	3	16	Private	Synthetic turf	Indoor soccer Indoor netball Indoor cricket	1 court - \$50 / hr 2 courts - \$80 / hr 3 courts - \$100 / hr
<b>Tallebudgera Active Recreation Centre</b>	3	17	State Government	Not Known	Roller sports, Basketball Futsal, Indoor netball, Rock climbing, Soccer Badminton, Volleyball, Martial arts / yoga	\$46.85 / \$40.95 full court per hour (lights/no lights) 29.30 / 23.40 half court per hour (lights/no lights)
<b>Cabarita Beach Table Tennis Club</b>	4 tables	19	Private	Timber	Table tennis	State membership \$25 per year Use of the Cabarita Beach Table Tennis Club is \$3 a session
<b>Paramount Adventure Centre</b>	Rock climbing wall	19	Private	Climbing wall	Rock climbing	Adults \$21 Students and Children \$19
<b>Ozsports Burleigh</b>	4	19	Private	Synthetic turf	Indoor soccer Indoor netball Indoor cricket	Not known
<b>Mt St Patrick College Murwillumbah</b>	1	28	School	Timber	Basketball, Netball, Volleyball	No charge
<b>Tweed Regional Aquatic Centre</b>	Pool	29	Tweed Shire Council	Pool	Swimming Yoga Aqua Aerobics	Casual entry \$4.80 Fitness classes \$10-\$12 Learn to Swim \$13.50
<b>Murwillumbah High School</b>	1 (full sized basketball)	30	School	Timber	Basketball, Volleyball Badminton	Not known
<b>Carrara Indoor Stadium</b>	4	38	Gold Coast City Council	Timber	Roller sports, Basketball Futsal, Indoor netball	\$30 per court per hour before 6pm \$43 per court per hour after 6pm
<b>Gold Coast Indoor Sport</b>	3	39	Private	Synthetic turf	Indoor cricket Indoor netball Indoor soccer Cage hockey	Indoor cricket \$96 per team per match Indoor netball \$77 per team per match Indoor soccer \$55 per team per match Cage hockey \$55 per team per match
<b>Runaway Bay Sports Super Centre</b>	Pools, beach volleyball courts, gymnasium	51	Private	Various	Swimming Volleyball	\$900 - Annual member \$15 member guest day pass.
<b>Byron Bay Sports and Cultural Complex</b>	2	62	Byron Shire Council	Timber	Aerobics and fitness Roller sports, Dancing, Basketball, Martial arts Indoor soccer, Badminton	\$38 per hour / \$28 per block for juniors \$52 / \$36 for seniors
<b>Cornubia Park Sports Centre</b>	4	78	Logan City Council	Timber	Aerobics and fitness Basketball, Martial arts Indoor soccer, Indoor netball, Volleyball Badminton, Rock climbing	Daytime 8.00am - 4.00pm \$29.00 / \$68.00 Per court/per hour Shoulder 4.00pm - 6.00pm \$36.50 / \$85.00 Per court/per hour Peak 6.00pm - Close \$49.00 / \$114.00 Per court/per hour Full Day 7.30am - 11.00pm \$1,470.00 / \$3,402.00 All courts

Preliminary Draft Only