

Welcome to the Spring edition of Ampers&nd, the newsletter of Jeavons & Jeavons Pty Ltd.

WYE RIVER PLAYGROUND OPENING !!

This playground inspired by local themes & materials was officially launched by Colac Otway Shire on August 23rd.

OPEN SPACE NEWS & VIEWS

■ More Open Space Workshops On The Way

@leisure & MJLA will be holding additional workshops this year:

- **Open Space Development Contributions:** *What is required; where & when*
- **Creating a Level Playing Field:** *Planning & design of school grounds to include children with a disability* **WED 20 NOVEMBER**
- **Grounds for Play: (Sydney)** *Design of outdoor spaces in school grounds* **FRI 15 NOV**
- **Grounds for Play: (Rural)** *Design of outdoor & accessible spaces in schools* **FRI 22 NOV**

BE QUICK! – Send your registrations ahead of time to be eligible for our Early Bird Rate.

■ Development Contributions Review

The Review of Development Contributions in Victoria: Report & Recommendations, is now complete. It entails an appendix outlining the suggestive legislative changes & is available on the Department of Infrastructure website. www.doi.vic.gov.au/planning We hope to build on these issues in the next workshop.

■ Inner Open Space Issues

Open space has been a strong theme in the City of Melbourne Recreation & Leisure Strategy. Emerging issues appear to be open space provision for the CBD, Docklands & for growing student populations. The report is now out for public comment.

■ Centre for Urban Ecology Report

Dr. McDonnell's research cited in (The Age, July 02) 'Claustrophobic? Here's a guide to city's great outdoors' has caused concern & debate among Councils & industry professionals. It seems that the standards used to calculate an acceptable standard of open space were derived from half that determined acceptable by the National Playing Fields Association (UK) way back in 1925! Outdated? Maybe, unfair? Certainly, especially to Councils like Glen Eira, Stonnington, Port Phillip, Boroondara, Banyule & Moonee Valley labeled as the worst areas in Melbourne for open space. The study did not include golf courses & tertiary institutions because they don't have full public access.

The report raises two questions: were other areas like some football & hockey fields or primary school grounds that restrict (fenced) public access included in the study? & where is our profession when these sorts of reports propose such outdated methodologies?

RECENT SEMINARS

Best Laid Plans: Planning & Design of Local Parks

Over 100 people attended the seminar sponsored by the City of Melbourne. It was a great day supported by local & interstate visitors. Topical issues included importance of:

- The natural environment to children's play
- Knowing your market when designing
- Involving operations staff in the process
- Planning for change & diversity

Thanks to all speakers: Greg Thorpe, Ron Jones Linda Corkery, Chris Cunningham & Glenn Dixon.

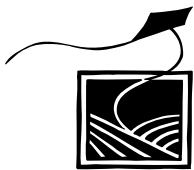
WILD & WET: The seminar brought together 80 planners, landscape architects, engineers & developers to discuss water in residential open space & user safety. The day was held in partnership with Royal Life & hosted by the City of Moonee Valley. It concluded with the launch of the Royal Life safety guidelines for such water bodies. Thank you to our speakers: Dr Peter Breen, Scott Seymour, Warrick Waters, Steven McGrath, Brooke Ryan & Norm Farmer.

GROUNDS FOR PLAY: 80 from schools & councils heard Dr June Factor & John Evans talk about the importance of school grounds for play. Mary Jeavons spoke about the relationship of child behaviour & features in the yard & then about design of equipment & spaces. Herb Jercher entertained us with ideas about sound. Joint projects with schools were discussed & the City of Hobsons Bay (who hosted the day) illustrated 2 great case studies. Shauna Sherker outlined her research on injuries on school playgrounds & ideas to address the causes.

SO MUCH FOR SKATE SAFE: Research by Shauna Sherker & Erin Cassell of Monash Uni Accident Research Centre (2001) shows personal protective equipment (PPE) use is low among in-line skaters in Vic, & much lower than overseas. Of 490 skaters observed, 66.7% wore no wrist guards, elbow & knee pads & helmets. Only 2.2% wore all four. Younger skaters were least likely to wear any. Trail skaters were more likely to wear PPE than others. Almost one-third of skaters did not have a heel brake on their skates!

Our skate work continues..... How much does it actually cost to manage a skate park (properly)? After preparing a number of lifecycle cost plans for skate parks around the country, we are now undertaking a project to review these against real costs. If you have details of management costs of your skate park - we'd like to hear from you!

We are now planning & designing skate installations for the Docklands Authority & have concluded Hornsby's Skate Feasibility.



MARY JEAVONS
LANDSCAPE ARCHITECTS
LANDSCAPE PLAY AREA PLANNING DESIGN

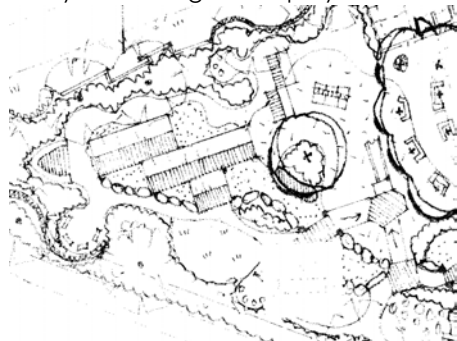


AROUND THE GROUNDS...

Elsternwick Park Playground (Stage 2)
The regional playground had its official opening recently. Childhood tales are the basis for several features of the accessible 'play structure' including a troll bridge & witches cauldron.

Yarra Junction Playground
This 'accessible playground' for the Shire of Yarra Ranges builds on local themes (a train, creek bed etc). This project is now under construction.

Pleasant Street Primary School (Ballarat)
A landscape master plan is now complete for this new school on the shores of Lake Wendouree. The design includes a new sand stream complex, junior & senior play structures, an arts courtyard & imaginative play area.



Above: A plan of the new layout of the Pleasant Street Primary School, Ballarat

Princess Elizabeth Junior School for Deaf Children:

A landscape master plan is currently underway for the school's new site.

Bulleen Heights Specialist School:

A new senior play area for children with autism & intellectual disabilities. It incorporates lookouts, textured panels, musical elements, talking tubes, ball race, slides & a rock-climbing wall.

Other Landscape Master Plans:

Master plans currently in progress or just completed are: Cranbourne West Primary School, McKinnon Primary School, Montague Continuing Education Centre, Broadmeadows Sporting Club & Wonthaggi Skate Park.

TRAIL TAILS

Touted as the longest paved recreational trail in the United States, the Willard Munger State Trail is a collection of four interconnected multi-use paths stretching 174 miles from St. Paul to Duluth! It lets walkers, cyclists, inline skaters & snowmobiles trace the route of the Lake Superior & Mississippi River Railroad through east central Minnesota's pristine northern hardwood forests, ranges of hills pocked with lakes & bogs, sheer rock cuts & rustic towns & villages. The trail commemorates the role this 19th-century rail line played in providing the first substantial link between Minnesota's principle Great Lakes port & its state capital. For other trail details visit: www.trailink.com

QUOTE OF THE MONTH:

An excerpt from:

THE CITY IS NOT A TREE 
by Christopher Alexander

Another favourite concept of the CIAM theorists & others is the separation of recreation from everything else. This has crystallised in the form of playgrounds. The playground is nothing but a pictorial acknowledgment of the fact that 'play' exists as an isolated concept in our minds, having nothing to do with the life of play itself. Play itself, the play that children practise, goes on somewhere different every day.

One day it may be indoors, another day in a friendly gas station, another day down by the river, another day in a derelict building, another day on a construction site which has been abandoned for the weekend. Each of these play activities & the objects it requires, forms a system. It is not true that these systems exist in isolation, cut off from the other systems of the city. The different systems overlap one another & they overlap many other systems besides. The units, the physical places recognised as play places, must do the same.

In a natural city this is what happens. Play takes place in a thousand places, it fills the interstices of adult life. As they play, children become full of their surroundings. How can children become filled with their surroundings in a fenced enclosure!

HIGH ON ART'S

People in small towns & disadvantaged urban areas have been traditionally left out of the world of new & classical music.

The American Composers Forum created **Continental Harmony** in 1998 as the nation's first 50 state music commissioning & residency project. The program brings individual composers & communities together to collaborate on music celebrating the community's identity & dreams.

Continental Harmony was launched with the belief that communities needed a sense of identity & pride to function & thrive, but rarely communities think of commissioned music as a public art form. Communities are discovering that music is a powerful way to redefine a community in times of change, to find catharsis from grief & to bind people together in the joy of community accomplishment. Composers are discovering previously untapped audiences in local churches, town councils & children's groups.

Source: **Drucker Foundation**

@leisure is currently completing arts & cultural strategies & feasibility studies for the Shires of Melton & Moorabool.

READER FEEDBACK

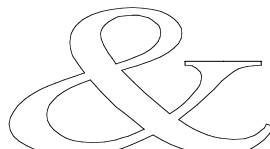
Fax: 03 9326 0991

What topics would you like us to explore in our next seminar series?.....

 name.....
 email.....
 phone.....



Rear 534 Mt Alexander Road Ascot Vale 3032
 ph: 03 9326 1662 fax: 03 9326 0991
 e-mail: leisure@jeavons.com.au



MJLA Landscape Architects
 1st Floor, 154 High Street Northcote 3070
 ph: 03 9486 8470 fax: 03 9486 1080
 e-mail: jeavons.la@bigpond.com

